



# Eshi Resorts

*“Eshi means a God’s gift, blessing or peace, love, truth or beauty”*

 Rajgurunagar, Bhimashankar Road-  
A/P-Taleghar Bhimashankar, Tai-Ambega-  
on, Dist-Pune, Maharashtra 410509

Contact Us

 +91 9309314374

 admin@eshiresorts.com

 www.eshiresorts.com

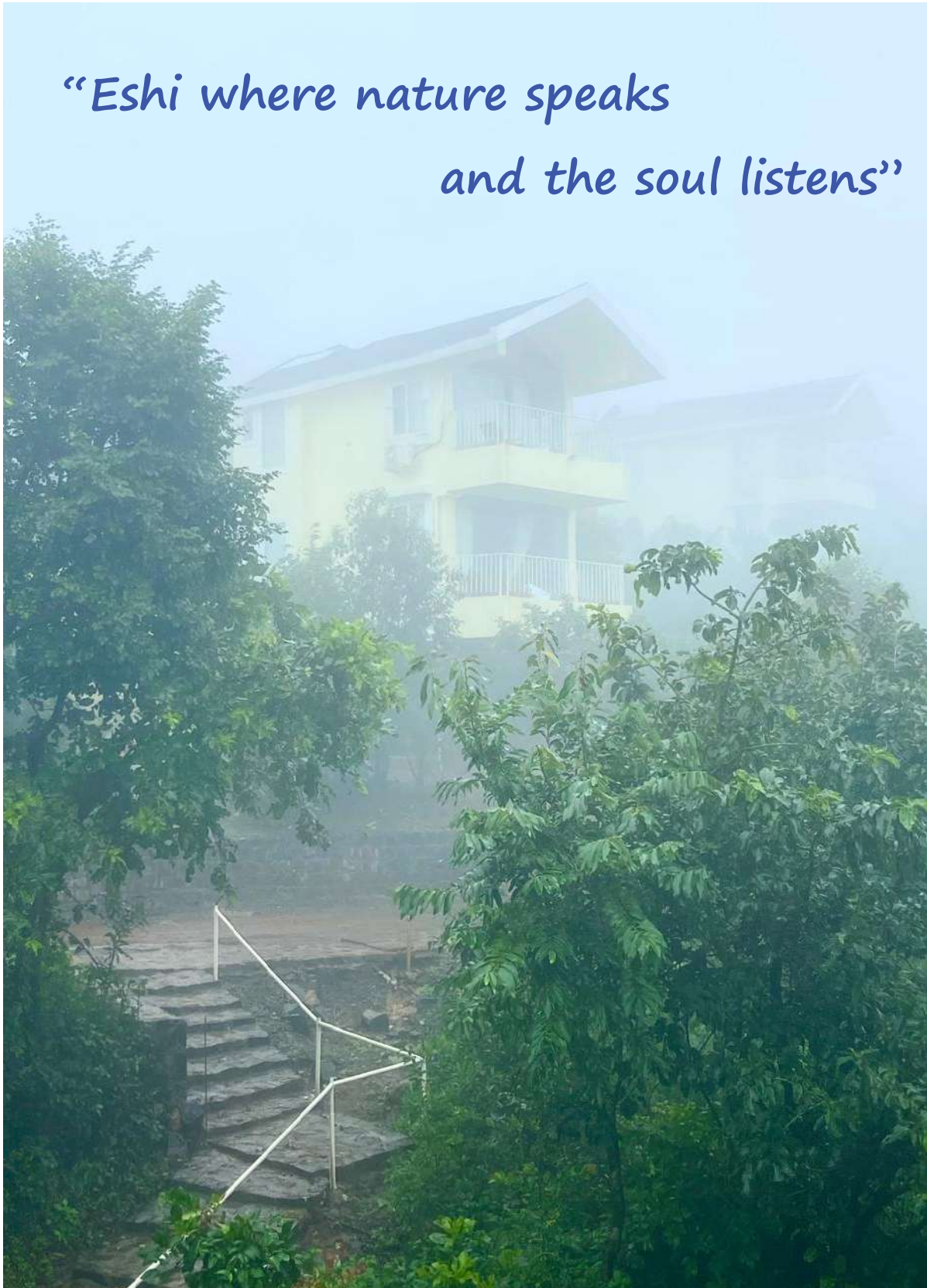
 eshiresortsbhimashankar

 eshiresortsbhimashankar

---

---

*“Eshi where nature speaks  
and the soul listens”*



---

*“Eshi welcomes you to pause, breathe and reconnect.”*

*Set at an altitude of nearly 900 meters above sea level, in the heart of the majestic Sahyadri Hills of the Western Ghats, Eshi Resorts is enveloped by ancient forests, vibrant wildlife and the soul-soothing silence of nature. The resorts remote, jungle setting offers a truly immersive escape – perfect for those seeking solitude, connection and rejuvenation.*





*“ Eshi Resorts is a place to feel, heal and belong ”*

*Discover a rare blend of wilderness, spirituality and refined luxury at Eshi Resorts, an exclusive retreat tucked away in the untouched forests near the sacred Bhimashankar Temple- one of the twelve Jyotirlingas and a deeply venerated destination for devotees of Lord Shiva. .*

---



*Eshi offers a rare harmony of luxury, spirituality, romance and eco-conscious living. Whether you are a world traveller drawn to India's richness, a couple seeking quite connection, a spiritual seeker in search of divine stillness, or a nature lover passionate about sustainable travel*

---



*Walk beneath a canopy of ancient trees, Eshi forest walks at dawn and the gentle sounds of nature create the perfect setting for connection and memory making. Surrounded by lush greenery and rich biodiversity, Eshi Resorts is the perfect heaven for those seeking peace, spiritual connection, and a deep immersion in nature.*

---

---

*“ Eshi Resorts where time slows down Nature “*

*Meditate at dawn to the soft calls of jungle birds and watch mist roll over the hills. Feel the soft earth beneath your feet as you meander along winding trails shaded by towering trees draped in emerald foliage. Listen closely to the symphony of birdsong, the gentle rustle of leaves and the distant call of wildlife echoing through the canopy.*





*“ Sunset Views, Soulful Moments “*

*Sunset at Eshi Resorts is nothing short of spectacle- an unforgettable daily ritual where nature puts on its grandest show. As the sun begins its slow descent behind the rolling hills of Bhimashankar, the entire resort is bathed in a warm, golden glow. The sky shifts from soft orange to deep crimson, then melts into hues of rose, lavender and dusky violet creating a surreal atmosphere that feels like a dream suspended in time.*

---

---

*“ Eshi Resorts built with deep respect for the environment and local traditions. ”*



*The rooms located on first and second floor, offers sweeping valley views- wake up to mist covered forests and serene hillscares right from your window or balcony*

---

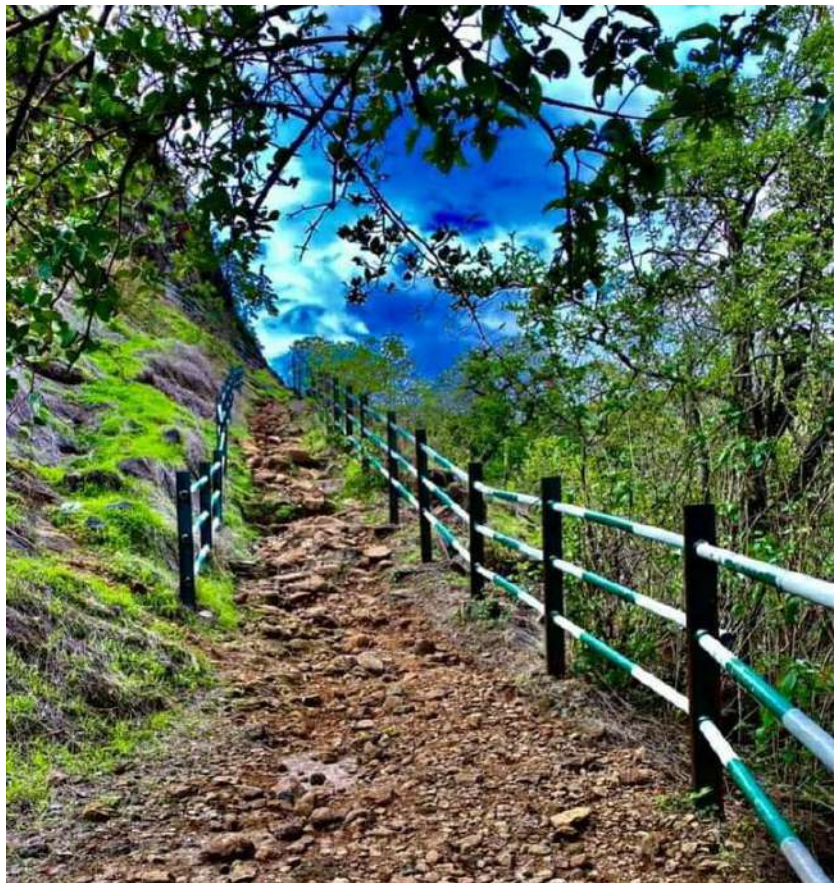
---

## “ Embark on a Soul – Stirring Jungle Walk ”



*Each walk is a journey of discovery – uncover vibrant wildflowers, marvel at the intricate web of vines and perhaps catch a glimpse of the elusive creatures that call this jungle home. As the sunlight filters through the dense foliage, casting dappled patterns on the forest floor, you shall find moments of profound peace and connection. Whether you seek adventure, solitude or a mindful retreat a walk in the jungle at Eshi is more than a stroll- it’s an awakening of the senses a celebration of life and an embrace of the timeless beauty that surrounds you.*

*Step beyond the boundaries of everyday life and immerse yourself in the pristine wilderness that cradles Eshi Resorts. Our guided jungle walks offer a rare invitation to wander through ancient forests where time slows and nature’s secrets unfold with every step.*





Loose yourself in a carefully curated library- a cozy haven of books spanning genres and interests from gripping novels and travelogues to spiritual texts. Find a quiet nook, let the words transport you, and savor moments of peaceful escape amid the whispers of the Jungle.



Engage in timeless fun with a classic carom board or enjoy a lively match on our expertly maintained pool table, perfect for friendly competitions that bring laughter and camaraderie.

---



For guests young and young at heart, the trampoline and swings provide joyful freedom beneath the canopy, where laughter dances on the breeze and every leap becomes a celebration of vitality and light-hearted fun.

Explore the enchanting surroundings on our bicycles, designed for tranquil rides through winding forest trails and charming nearby villages. Feel the fresh air, absorb the vibrant colors of nature and experience the Sahyadri landscape at peace that lets you truly connect with its soul.



---

*“A wedding woven into the beauty of the mountains ”*

*Cradled in the emerald embrace of Bhimashankar's mist-kissed mountains, Eshi Resorts is where nature whispers its blessings into every celebration. Towering trees, lush green landscapes and the soothing rhythm of the hills create a canvas of serenity and romance – perfect for destination weddings and cherished family gatherings. Here every moment feels timeless, every breeze carries joy and every corner is a frame for unforgettable memories.*





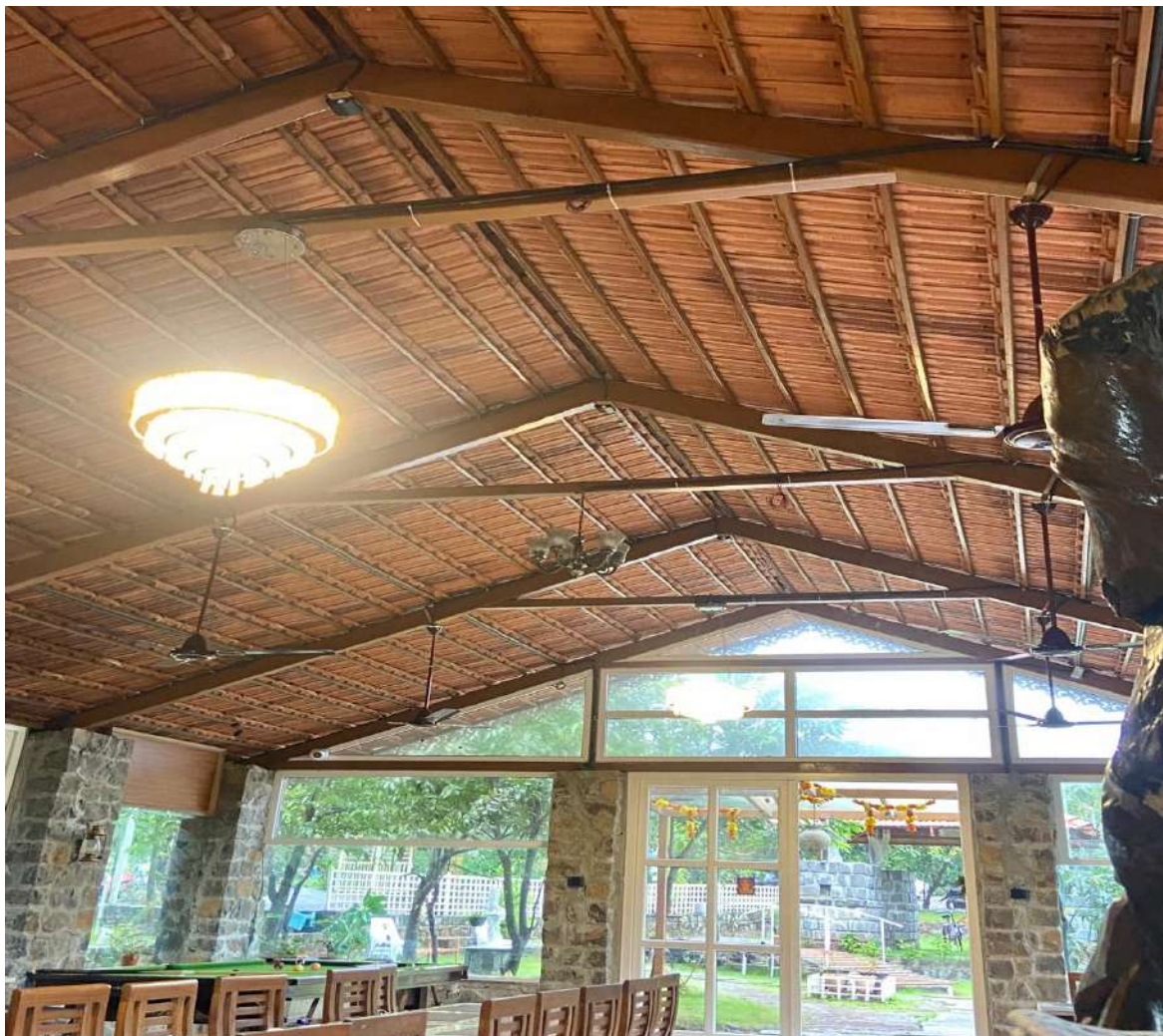
## *“ Eshi Restaurant – A Culinary Journey Amidst ”*

*At Eshi Resorts, dining transcends the ordinary to become a soulful celebration of flavor, culture and nature. Set against the breathtaking backdrop of the Sahyadri hills and envoped by the tranquil jungle, our restaurant offers an extraordinary culinary experience where every meal is a journey.*

---

---

*The ambience is a harmonious blend of rustic elegance and modern comfort – featuring expansive windows that invite the lush greenery and fresh mountain air inside, every moment here is infused with the spirit of the wild.*



---

## “Rooms at Eshi means a Stay Surrounded by Serenity ”

*At Eshi Resorts, every room is a tranquil retreat designed to harmonize luxury with nature. Whether nestled against the backdrop of misty mountains or embraced by dense jungle greens, the resorts accommodations promise comfort, calm and captivating views, warm, earthy interiors, large windows that invite the outdoors in, and the soothing silence of the forest all around. Each room is thoughtfully curated to suit different kinds of travellers-from romantic gateways to family vacations or solo escapes.*



---

*“ Premium rooms at Eshi -A Symphony of  
Luxury and Nature “*

*Elevate your stay to realm where luxury whispers to the wilderness. Our Premium Rooms, gracefully perched on the second floor, offer not just a room but a sanctuary of serenity- where every morning dawns with panoramic vistas of mist- kissed valleys and rolling Sahyadri hills.*



*“A luxurious Jacuzzi  
bathtub, perfect for  
soaking away stress ”*



---

*Step into a space where the rustle of the forest mingles with refined luxury and the soul finds rest in the harmony of earth and elegance. Whether making a cherished moment or seeking refuge from every day, these rooms promise an experience as timeless and enchanting as the hills themselves*



*“ Romantic and regal canopy beds,  
adding charm and comfort ”*

---



“Air conditioning to ensure year round comfort ”

“ A personal refrigerator to keep your refreshment chilled ,Tea and coffee maker Comfortable in room slippers ”





guests enjoy the added comfort of \*complimentary mineral water\* throughout their stay, ensuring hydration and refreshment at every moment of relaxation.

Soft , high quality towels  
Export quality bedsheets  
and plush duvets



The kit is equipped with dental kit ,shaving kit ,shampoo and conditioner nourishing body lotion refreshing bath soap

---

Luxury, comfort, and nature's beauty – all  
under one roof, in every room at Eshi  
Resort

## Room Types at Eshi Resorts

At Eshi Resorts, your comfort is our priority. Each room is thoughtfully equipped with a range of premium amenities to enhance your stay.

---

---

## Standard Double Room with Fan – Jungle View

A spacious 510 sq. ft. room on the ground floor with peaceful jungle views and a private balcony.

Room amenities includes:

King-size bed (6.5 ft x 6.5 ft)  
32" Flat-screen TV  
Free Wi-Fi\* & Intercom  
Refrigerator & electric kettle  
Tea/coffee sachets & Mineral water  
Sofa, Chair, and Relaxing chair  
Clothes rack, center table  
Socket near bed, Marble flooring  
Attached Washroom with toiletries  
Room slippers, Washroom slippers  
personal care kit ( Dental kit, shaving kit ) Shampoo and conditioner  
Nourishing body lotion  
Refreshing bath soap  
Soft , high quality towels  
Export quality bedsheets and plush duvets

Room Charges @ Rs.5500+Applicable GST @12%





---

# Superior King Room with AC – Mountain Views

A spacious 510 sq. ft. room on first floor with peaceful jungle views and a private balcony.

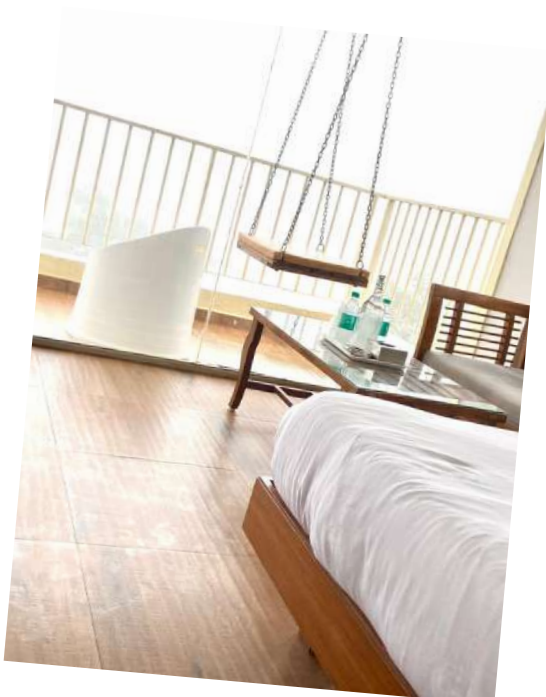
Room amenities includes:

King-size bed (6.5 ft x 6.5 ft)  
32" Flat-screen TV  
Free Wi-Fi\* & Intercom  
Refrigerator & electric kettle  
Tea/coffee sachets & Mineral water  
Sofa, Chair, and Relaxing chair  
Clothes rack, center table  
Socket near bed, Marble flooring  
Attached Washroom with toiletries  
Room slippers, Washroom slippers  
personal care kit ( Dental kit, shaving kit )  
and conditioner  
Nourishing body lotion  
Refreshing bath soap  
Soft , high quality towels  
Export quality bedsheets and plush duvets



**Additionally, equipped with -  
-Air Conditioner**

**Room Charges @ Rs.6500+Applicable GST @ 12%**





## Deluxe Double Room with AC & Scenic Views

A spacious 510 sq. ft. room on first floor with peaceful jungle views and a private balcony.

Room amenities includes:

King-size bed (6.5 ft x 6.5 ft)  
32" Flat-screen TV  
Free Wi-Fi\* & Intercom  
Refrigerator & electric kettle  
Tea/coffee sachets & Mineral water  
Sofa, Chair, and Relaxing chair  
Clothes rack, center table  
Socket near bed,Marble flooring  
Attached Washroom with toiletries  
Room slippers, Washroom slippers  
personal care kit ( Dental kit, shaving kit )  
and conditioner  
Nourishing body lotion  
Refreshing bath soap  
Soft , high quality towels  
Export quality bedsheets and plush duvets

Additionally,it equipped with -

- Air Conditioner
- Canopy Bed
- Jacuzzi Bathtub

Room Charges @Rs.7800+Applicable GST @18%







# King Room with AC & Scenic Views

A spacious 510 sq. ft. room on second floor with peaceful jungle views and a private balcony.

Room amenities includes:

King-size bed (6.5 ft x 6.5 ft)  
42" Flat-screen TV  
Free Wi-Fi\* & Intercom  
Refrigerator & electric kettle  
Tea/coffee sachets & Mineral water  
Sofa, Chair, and Relaxing chair  
Clothes rack, center table  
Socket near bed, Marble flooring  
Attached Washroom with toiletries  
Room slippers, Washroom slippers  
personal care kit ( Dental kit, shaving kit )  
and conditioner  
Nourishing body lotion  
Refreshing bath soap  
Soft , high quality towels  
Export quality bedsheets and plush duvets



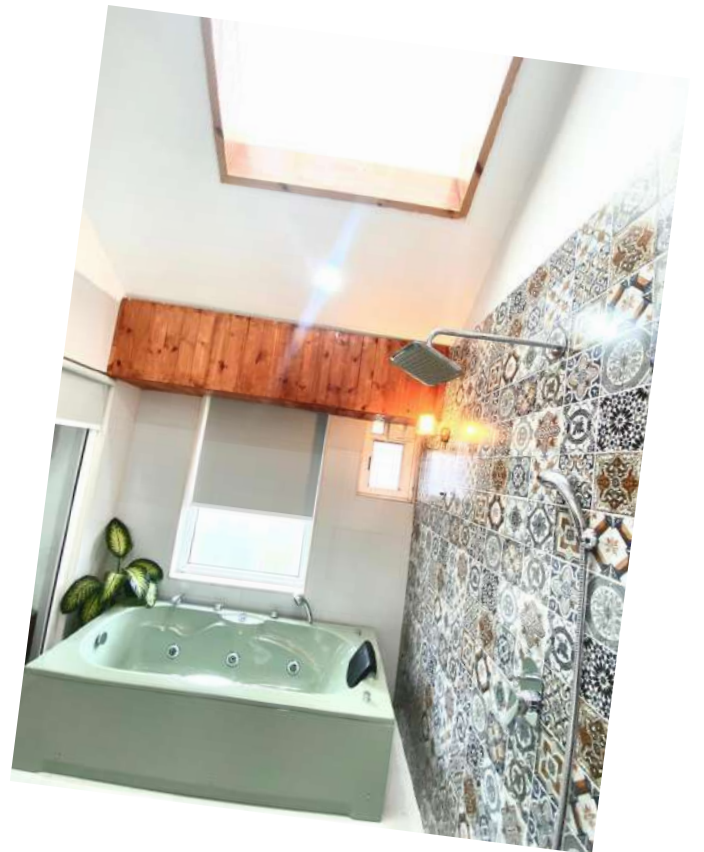
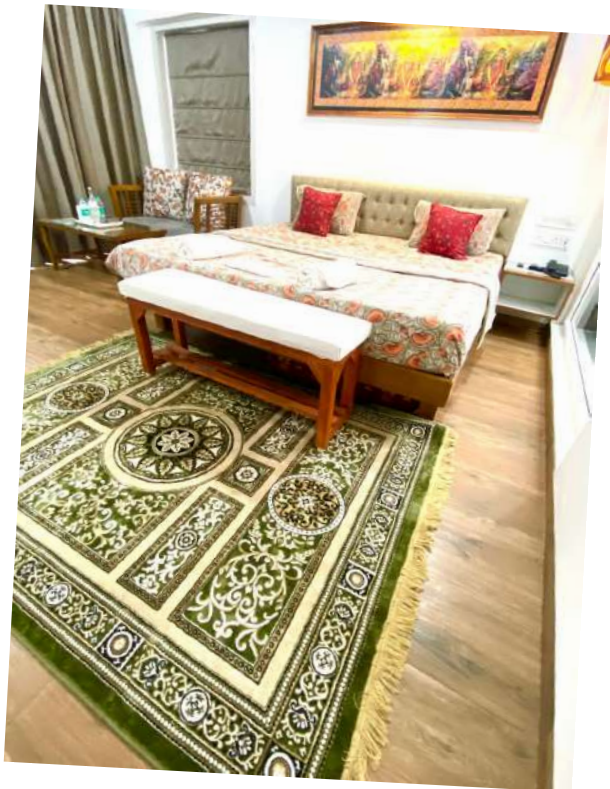
Additionally, it equipped with -

- Air Conditioner
- Refrigerator
- Jacuzzi Bathtub

Room Charges @Rs.8000+Applicable GST @18%







# King Room with AC, & Valley/Mountain Views

Enjoy luxury, comfort, and breathtaking views in our spacious 510 sq. ft. King Room on second floor, perfectly designed for a serene getaway in nature.

Room amenities includes:

King-size bed (6.5 ft x 6.5 ft)  
42" Flat-screen TV  
Free Wi-Fi\* & Intercom  
Refrigerator & electric kettle  
Tea/coffee sachets & Mineral water  
Sofa, Chair, and Relaxing chair  
Clothes rack, center table  
Socket near bed, Marble flooring  
Attached Washroom with toiletries  
Room slippers, Washroom slippers  
personal care kit ( Dental kit, shaving kit )  
Shampoo and conditioner  
Nourishing body lotion  
Refreshing bath soap  
Soft , high quality towels  
Export quality bedsheets and plush duvets

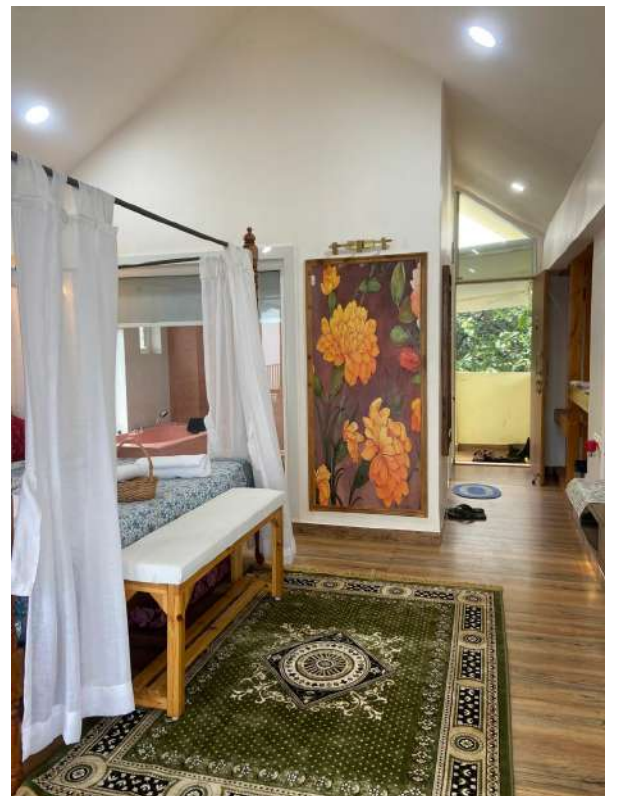
Additionally, it equipped with -

- Air Conditioner
- Refrigerator
- Jacuzzi Bathtub
- Canopy Bed

Room Charges @Rs.8300+Applicable GST @18%







---

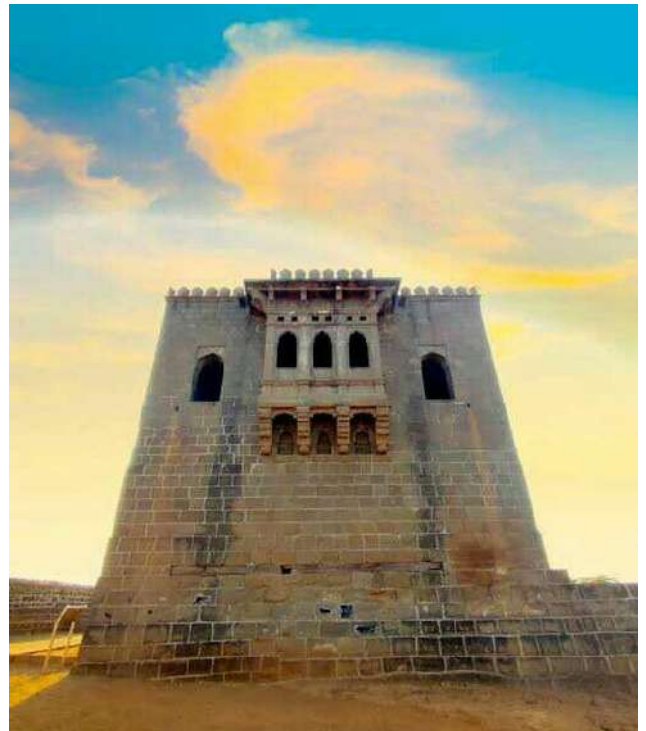
## Nearby Places to Visit



*Bhimashankar Temple* 14kms

*Bhimashankar Temple, located in the Sahyadri Hills of Maharashtra, is one of the 12 Jyotirlingas dedicated to Lord Shiva. Surrounded by forests and wildlife, it features a Swayambhu Shiva Linga and is renowned for its spiritual and natural beauty.*

*Perched atop the rugged hills near Junnar, Shivneri Fort stands as a timeless sentinel of history. Cradle of the great Chhatrapati Shivaji Maharaj, its walls whisper tales of valor, strategy, and legacy, where every stone echoes the spirit of a warrior and the pride of a kingdom.*



*Shivneri fort* 57Kms



**Bhimashankar Wildlife  
Sanctuary** 6.3kms

*Amidst the misty Sahyadri Hills lies the Bhimashankar Wildlife Sanctuary, a lush haven where forests breathe and streams murmur. Home to the elusive Indian Giant Squirrel and myriad flora and fauna, it is nature's serene symphony, inviting wanderers to lose themselves in its timeless green embrace.*

*Tucked in the verdant hills of Bhimashankar, Hanuman Lake mirrors the sky and forest alike. Its calm waters ripple with whispers of nature, offering a serene retreat where travelers can pause, reflect, and drink in the tranquil beauty of the Western Ghats.*



**Hanuman Lake,** 16.4kms

---



*Ahupe waterfall* 38kms

*Nestled in the misty forests of Bhimashankar, Ahupe Waterfall cascades gracefully, whispering tales of nature's serenity. Amidst verdant greenery and rugged rocks, its sparkling waters create a tranquil symphony, inviting travelers to pause, breathe, and lose themselves in the poetry of the Western Ghats.*

*In the heart of lush greenery stands Ozar Temple, where devotion and serenity intertwine. The sacred chants mingle with the whispering breeze, and every stone and pathway echoes tales of faith, inviting souls to pause, reflect, and bask in timeless spiritual grace.*



*Vigneshwara Temple, Ozar* 72kms

---



### *Lenyadri Caves* 64kms

*Carved into the rocky hills of the Western Ghats, the Lenyadri Caves whisper ancient tales of devotion. Amidst rugged stone and sacred silence, pilgrims find a serene path to the divine, where history and spirituality flow together in timeless harmony.*

---

---

# Thank You



## Eshi Resorts

📍 Rajgurunagar, Bhimashankar Road-  
A/P-Taleghar Bhimashankar, Tai-Ambega-  
on, Dist-Pune, Maharashtra 410509

### Contact Us

☎ +91 9309314374

✉ admin@eshiresorts.com

🌐 www.eshiresorts.com

📷 eshiresortsbhimashankar

📺 eshiresortsbhimashankar

